

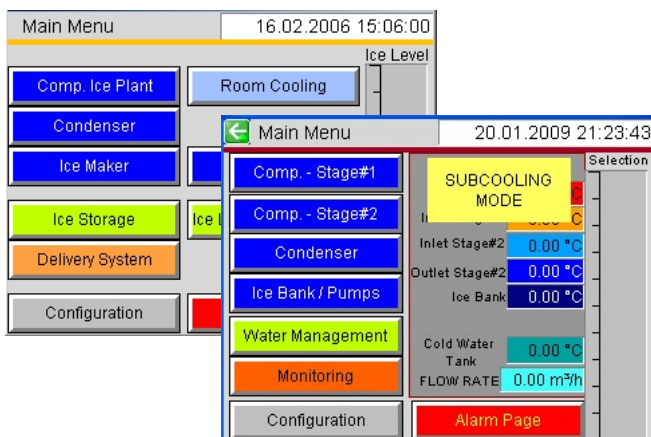
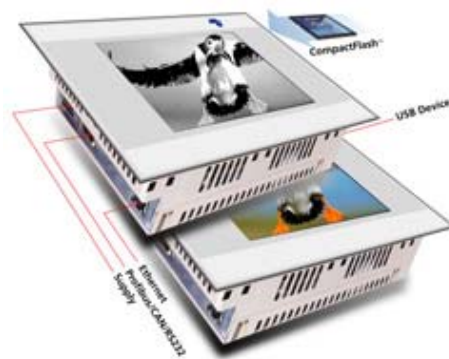


The latest generation of

VISUAL DISPLAY AND CONTROLS OF KTI – PLANTS

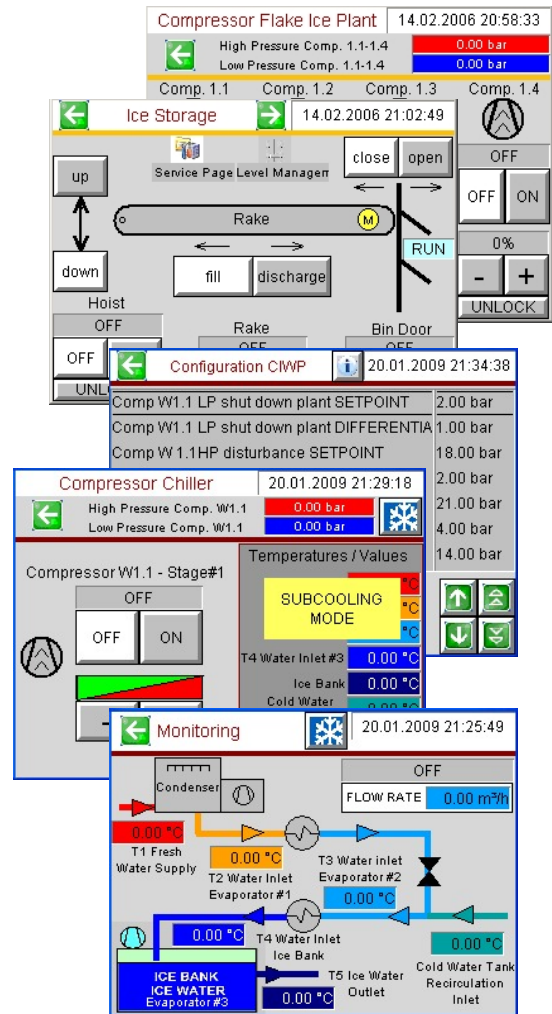
Continuous improvements and developments are a buzz word in KTI which lead us to the design of reliable and user friendly high quality plants. The new generation of KTI - Ice Plants and KTI – Chiller Plants¹ are equipped with a high quality reliable Siemens S7 PLC system.

KTI designed and developed a new visual display which is a self explaining, comfortable and reliable way to operate Ice plants and Chiller plants by touch panel.



settings and configuration:

- All required timers and pressure settings can be done easily
- Alarm messages and an alarm history assist for troubleshooting
- HELP is available for all settings and alarms to assist the operator
- Adjust the ice level in the ice storage!
Adjust the water level in the cold water tank!
- Temperatures are listed in different ways, always to have the best overview. A digital recording of the flow rate indicates the capacity of the chiller plant.
- Flexibility in design, customizing and realisation of special solutions at low costs.



Reliability and high Quality

Siemens is one of the most famous manufacturers of PLC Systems worldwide. These reliable Systems are not only standard in the Automotive Industry; these components are perfect for rough conditions at site. It is the most common PLC in Europe! The PLC S7 from Siemens is already used for the last 15years and parts are available for the next 30 years! The PLC is the heart of the plant!

Comfortable

The plant is operated by a Touch panel. The system is self explaining and all serious important settings are password protected. It is a self explaining system.

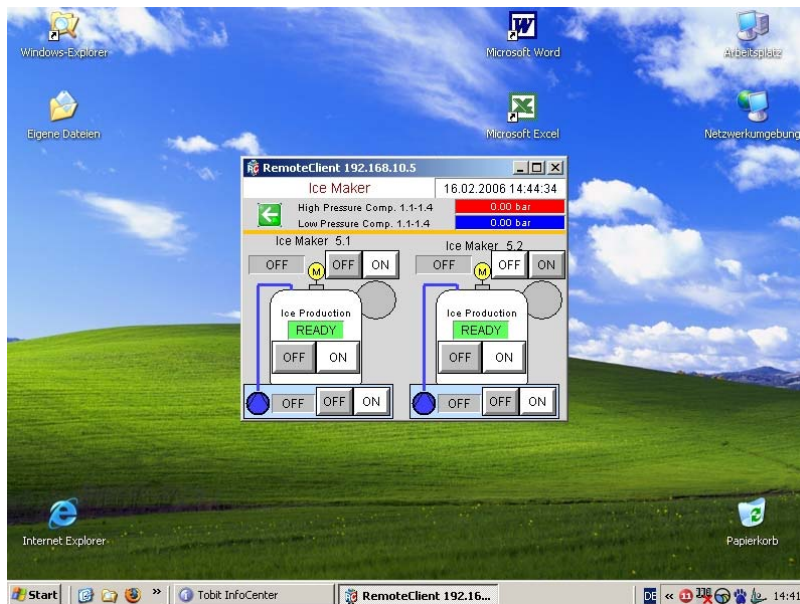
All functions are interlocked, not to destroy any part by misuse.

An option, which KTI promotes the first time is a REMOTE CONTROLLED and operated Plant. This system could be installed anytime – later on.

Remote control

An optional Remote Client Software allows to control and survey the KTI – ice or chiller plant. Any computer within a network could control and survey the plant.

An Ethernet interface connection allows the customer to integrate the panel in any network. Windows CE, the Operation System of the panel assures compatibility to any Windows PC.



1 PLC not available at Chiller Plants smaller than CIWP72